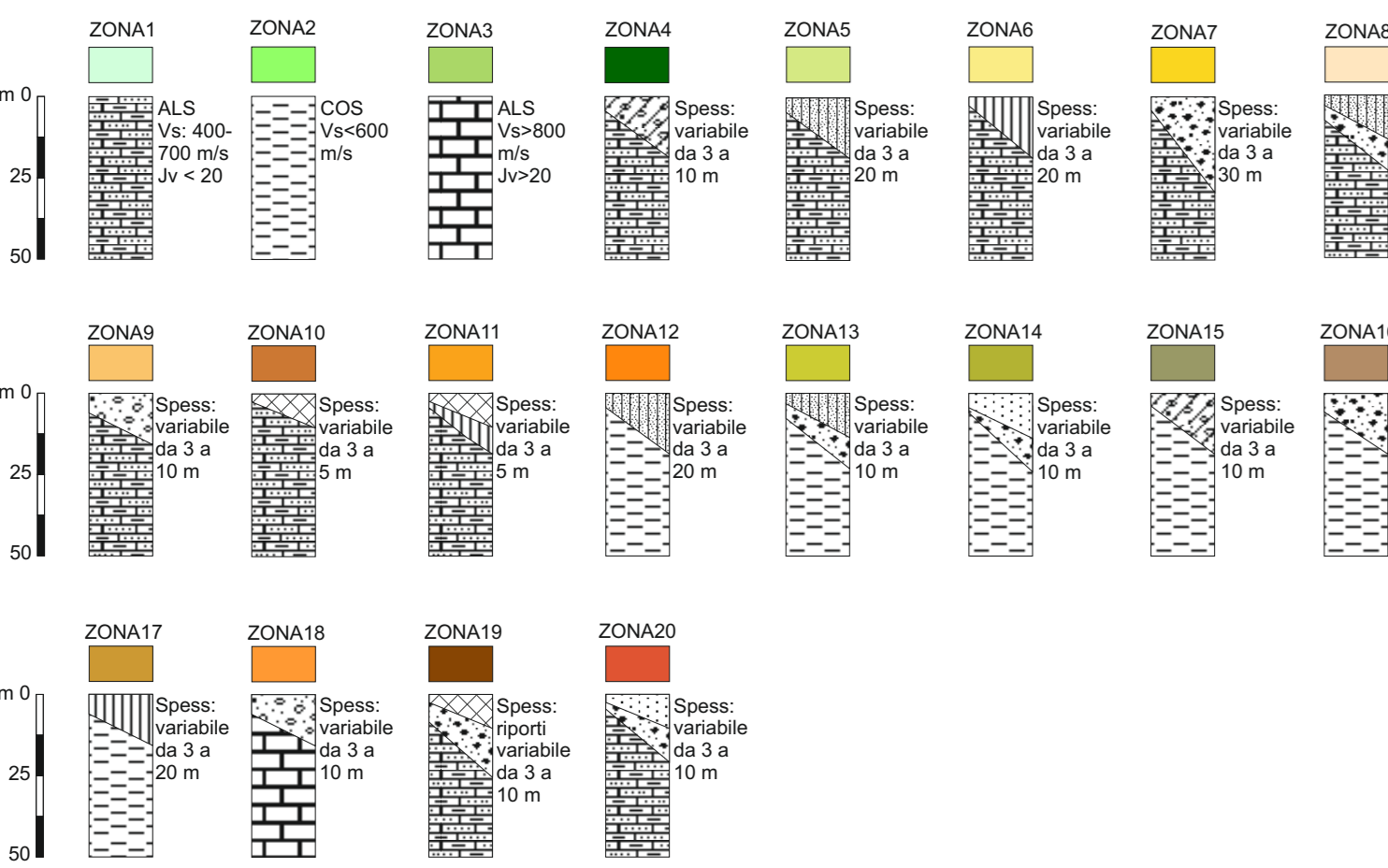


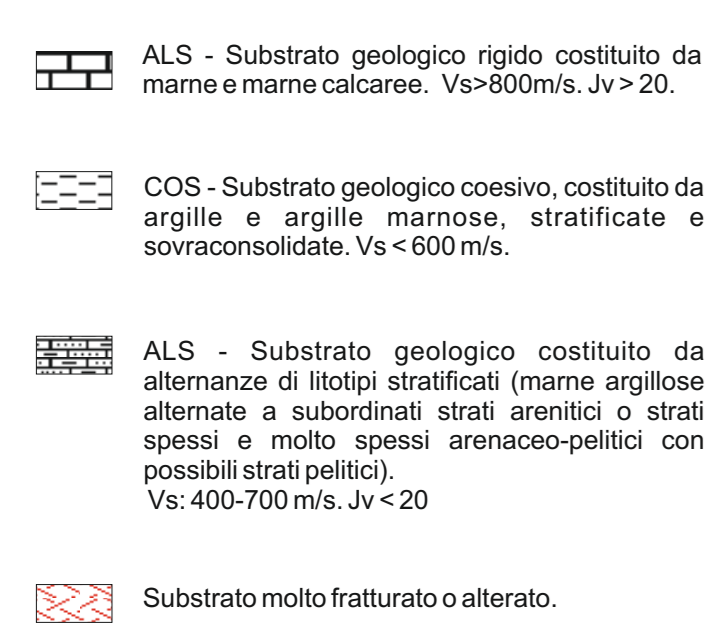


LEGENDA

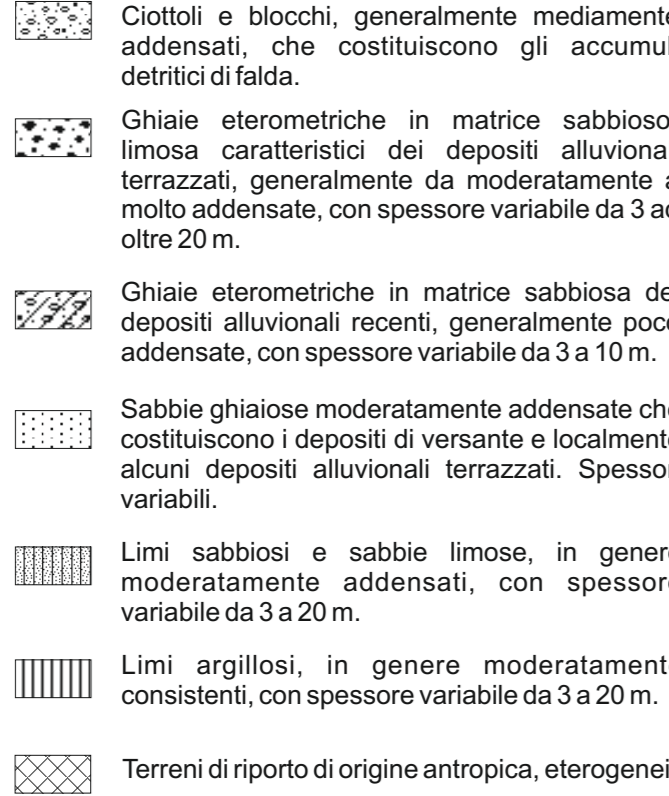
Zone stabili suscettibili di amplificazioni locali



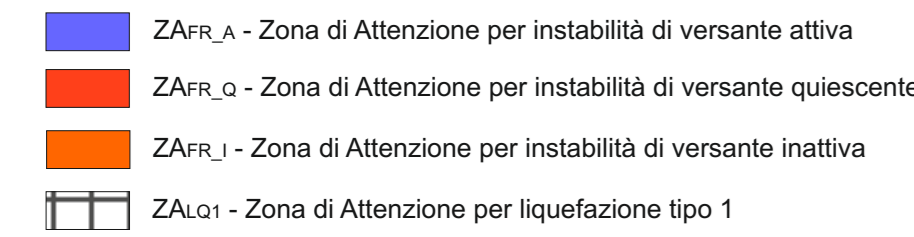
SUBSTRATO RIGIDO E NON RIGIDO



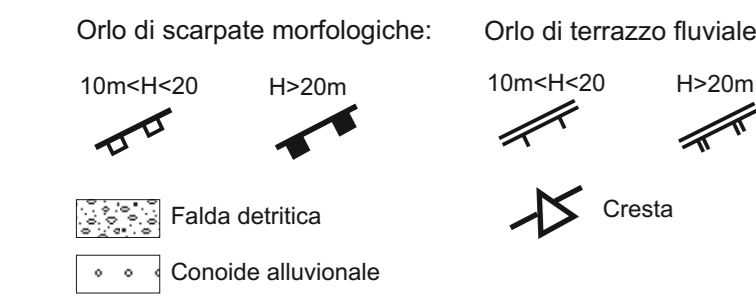
DEPOSITI DI COPERTURA



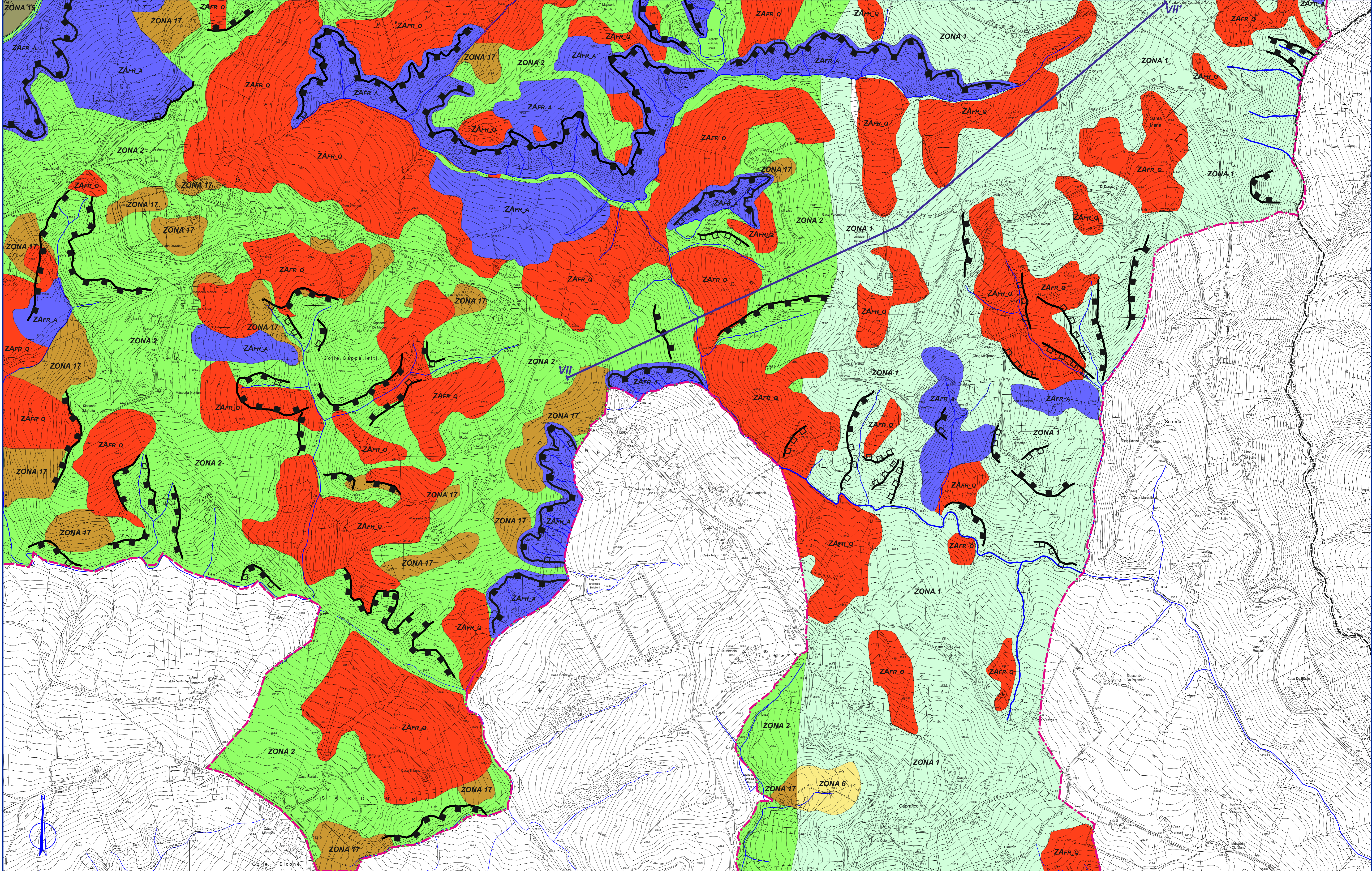
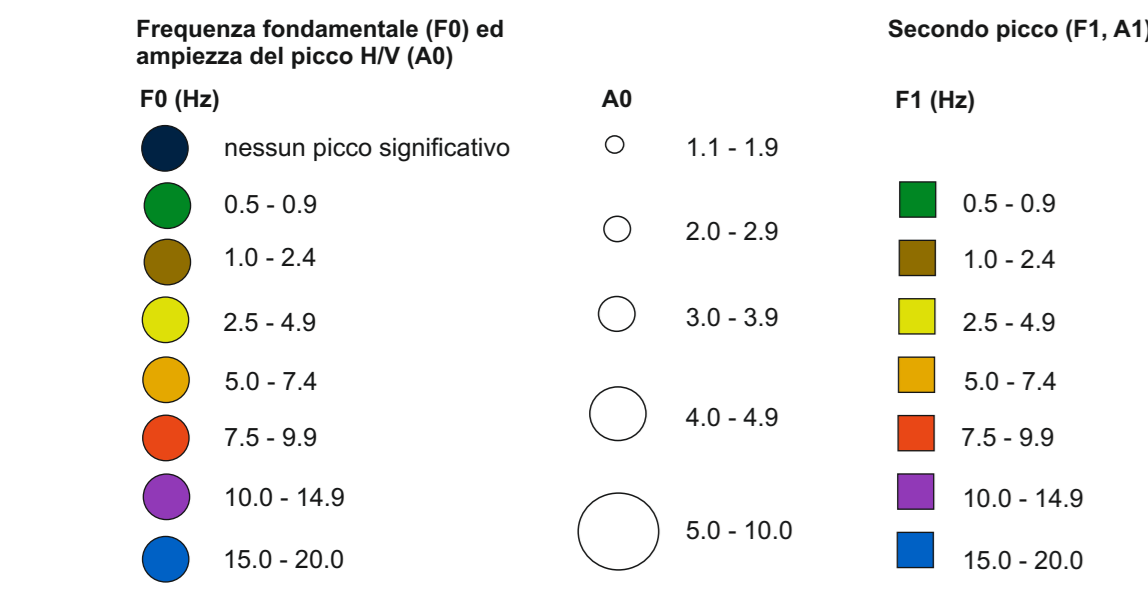
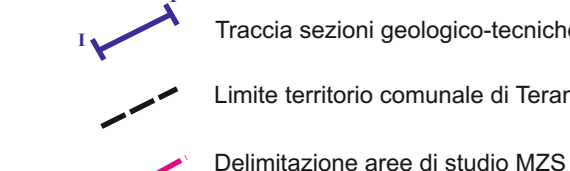
Zone di attenzione per instabilità



Forme di superficie



Altri elementi



INQUADRAMENTO TERRITORIALE COMUNE DI TERAMO

